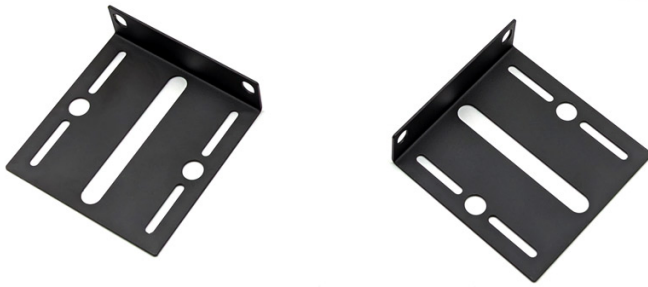




RED Power Indicator
Shows there is AC power to the unit.
It is independent of the Switches
Should this not be **ON** then -
1st check the power is connected
2nd check the plug fuse & replace
if necessary.

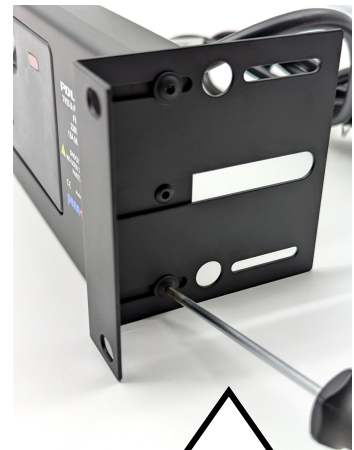


PLEASE NOTE:
*In the event of a Power Surge or
Lightning Strike the protection
circuit will be activated.
This will result in a blown fuse.*

Earth Strap Point
For attachment to the rack
unit



Vertical Set Back Application



The brackets can be fitted
in any of 6 positions to suit
the required application



**Horizontal Rack Rear
Set Back Application**

All components used in this unit conform to current RoHS, CE & UL certification BS1363A, BS1362, SASO 2203
(EMI:EN55022 (CISPR22) Class B; EN61000-3-2,3 EMS:EN61000-4-2,3,4,5,6,8,11; Light industry level, criteria A)
E&OE

**Designed & Manufactured in the UK
byPenn Elcom**

9-10 Parsons Road - Parsons Industrial Estate
Washington - Tyne & Wear - NE37 1HB - UK

OPERATION & USER GUIDE TO 19 INCH RACK MOUNT POWER DISTRIBUTION UNITS

**Please read the following information before installing or
using your Power Distribution Units**

Safety and Grounding (earth)

- This PDU is intended for indoor use only.
- Do not install this PDU where excessive moisture or heat is present.
- Never install any wiring, equipment, or PDU's during a lightning storm.
- Always connect this PDU into a three-wire, grounded power outlet.
- The power input cable should be connected to appropriate branch circuit/mains protection (fuse or circuit breaker). Connection to any other type of power outlet may result in a shock hazard.
- Use only the supplied brackets for mounting.
- Never work alone under hazardous conditions.
- Check that the power cord, plug, and socket are in good condition.
- Disconnect the PDU from the power outlet before you install or connect equipment to reduce the risk of electric shock if you cannot verify grounding. Reconnect the PDU to the power outlet only after you have made all connections.
- Use a protective earth connector with equipment. This type of connector carries the leakage current from the load devices (computer equipment). Do not exceed a total leakage current of 3.5mA or a risk of electrical shock will result.
- ALWAYS make sure the equipment that has been connected to the PDU is **OFF**, before switching on the PDU, as the **Inrush Current** can trip the power fuse and activate the protection circuit.
- All equipment plugged into this unit should have the correct fuses fitted for their current draw.
- Penn Elcom Ltd accepts no responsibility or liability for any equipment connected to this unit

GUARANTEE

YOUR EQUIPMENT IS GUARANTEED FOR A PERIOD OF ONE YEAR FROM THE DATE OF PURCHASE OF THE PRODUCT AGAINST ANY DEFECTS DUE TO FAULTY MATERIALS OR FAULTY MANUFACTURING. DURING THIS PERIOD, REPLACEMENT OR REPAIR TO THE UNIT WILL BE MADE WITHOUT CHARGE BY ANY AUTHORISED DEALER OR THE FACTORY SUBJECT TO THE FOLLOWING CONDITIONS.

The fault must be entirely due to faulty materials or faulty manufacture.

*The defect must **NOT** have been caused by poor installation, accidental damage, misuse or failure to comply with the instructions given in the users guide.*

If at any time during the guarantee period a part or parts of the equipment are repaired with a part or parts not supplied or approved by us; or if the equipment has been dismantled or repaired by any person not authorised by the us, then the guarantee shall immediately cease and become void.

Evidence of the date of purchase must be produced at the service point to obtain the benefit of this guarantee. Any carriage charges relating to the guarantee will be the responsibility of the purchaser.

This guarantee applies to the original purchaser only and the equipment must have been purchased or financed from new, this guarantee cannot be assigned or transferred.

The company reserves the right to replace the equipment or repair it at their discretion, any defective part shall become the property of the company.

This guarantee applies to equipment purchased and used within the E.E.C. The importers of equipment in non E.E.C. countries are responsible for the guarantee of this unit. Parts required under guarantee are free. Shipping charges for components will be charged at cost.

The guarantee shall become void if the equipment is at anytime used on any supply circuit or voltage range other than that specified on the equipment.

12. THIS GUARANTEE DOES NOT IN ANY WAY AFFECT YOUR STATUTORY RIGHTS AS A CONSUMER.

Declaration of Conformity

The Manufacturer of the Products covered by this Declaration is



Made in the UK by Penn Elcom
9-10 Parsons Road, Parsons Industrial Estate,
Washington Tyne & Wear, NE37 1HB, UK

The Directives covered by this Declaration

89/336/EEC Electromagnetic Compatibility directive, as amended
73/23/EEC Low Voltage Equipment directive, amended by 93/68/EEC

The Products Covered by this Declaration

PDU6-SW

13A MAX 2U Rack Mount 6 Ch Switchable A/C Power PDU

Usable Voltages 230V-250V ~ AC 50-60Hz - Max Current: 13A
Input = 1x UK 13A Plug (UK1-13P) BS1363A /G
Outputs = 6 x UK 13A 240V (UK1-13R) BS1363A /G
with a Maximum Combined Load 13A through a 13A Fuse

The Basis on which Conformity is being Declared

The manufacturer hereby declares under his sole responsibility that the products identified above comply with the protection requirements of the EMC directive and with the principal elements of the safety objectives of the Low Voltage Equipment directive, and that the following standards have been applied:

All components used in this conform to current RoHS, CE & UL certification

(EMI:EN55022 (CISPR22) Class B; EN61000-3-2,3 EMS:EN61000-4-2,3,4,5,6,8,11; Light industry level, criteria A)

The technical documentation required to demonstrate that the products meet the requirements of the Low Voltage Equipment directive has been compiled and is available for inspection by the relevant enforcement authorities.

The CE mark was first applied in: 2019

The UKCA mark was first applied in: 2023

Signed:

A handwritten signature in black ink, appearing to be "D. J. ...", written over a horizontal line.

Authority: Department Production Manager

Date: 29/11/2024

Attention!

The attention of the specifier, purchaser, installer, or user is drawn to special measures and limitations to use which must be observed when these products are taken into service to maintain compliance with the above directives. Details of these special measures and limitations to use are available on request and are also contained in the product manual.